

# Cafcass Performance Report

March 2016 Summary



## Summary of Key Issues

- Demand continues to rise significantly compared to last year:
  - Public Law Care demand for the 2015/16 financial year was a record high, with **12,741** applications (a **14.2%** increase from 2014/15).
  - The latest quarter of 2015-16 (Jan-Mar) has seen exceptionally high demand, an increase of **19.1%** when compared to the same quarter in 2014/15.
  - Our stock of open care cases continues to increase and is 11.4% higher than March 2015.
  - Cafcass received a total of **37,649** private law cases between April 2015 and March 2016. This figure is **10.3%** higher (3,530 cases) than the 2014/15 financial year.
- Given the rise in overall demand, case duration trends remain steady, and there has been a significant improvement in the throughput of public law work
- Current forecasts predict continued increases in both in public and private law demand in the 2016/17 financial year compared. MoJ forecast for public law range from 7% to 14% based on various scenario based forecast for 2016/17.
- KPI performance remains very positive and continue to exceed target.

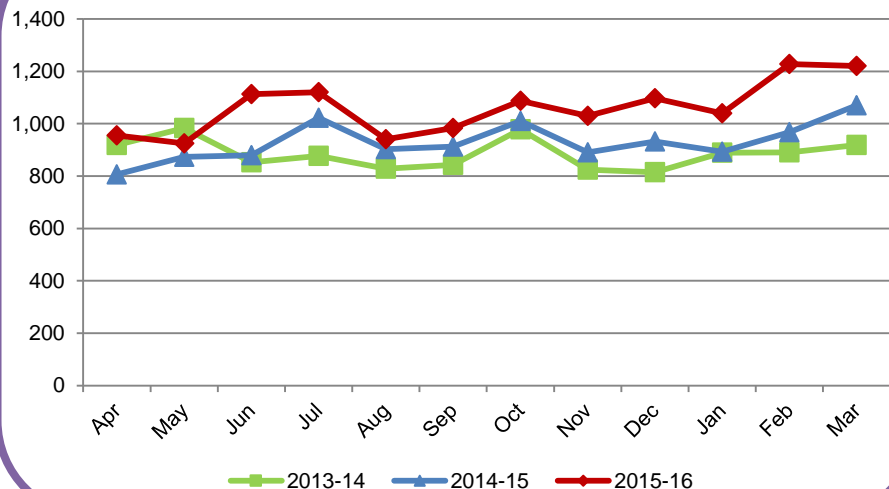
# Cafcass Performance Report

## March 2016 Summary



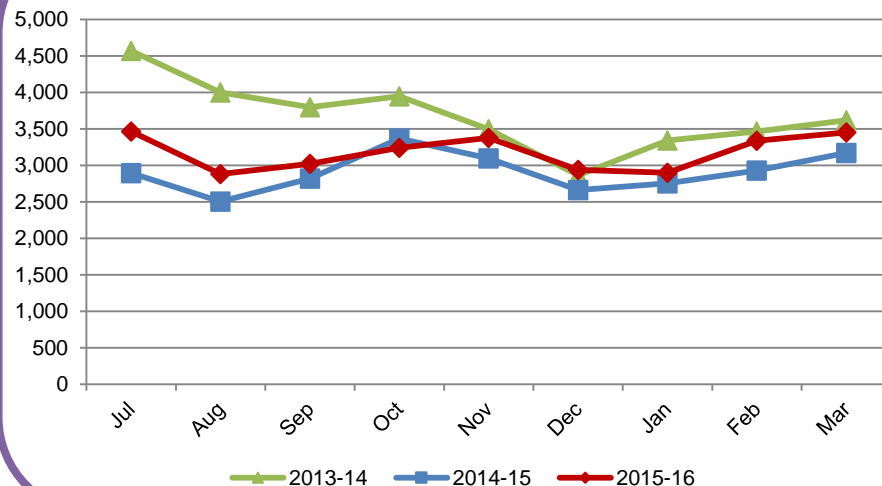
### Public Law (Care)

Public law care application demand



### Private Law

Private law case demand



- Between April 2015 and March 2016, Cafcass received **12,741** care applications. This figure is **14.2%** (1,582 applications) **higher** than the same period last year.
- As a result of the increased demand, the stock of open care cases continues to increase, compared to March 2015 (8,144 cases), the stock at the end of March 2016 (**9,071** cases) has increased by 11.4% (**927** cases). The current care stock level has been the highest since September 2013.
- s31 applications completed in the Q3 2015-16 took on average **29 weeks** to conclude, this has remain unchanged since Q2 15-16.

- Cafcass received a total 37,649 private law cases in this year. This figure is 10.3% higher (3,530 cases) than 2014-15 and 19.3% lower (8,987 cases) when compared to the 2013-14 financial year. On Average Cafcass received in excess of 3,100 new private law cases per month during the 2015/16 financial year.
- The stock of open private law cases as at the end of March 2016 (**15,033** cases) was **10.4%** lower than March 2015 (1,788 cases).
- Quarterly average Cafcass private law duration has fallen to **22 weeks**. This is the measure of the duration for Cafcass' involvement within the overall duration of the case .

# Key Performance Indicators (KPI)



**KPI 1**

**99.7%**



**KPI 2**

**0.7 Days**



**KPI 3**

**98.7%**



**KPI 4**

**98.8%**



Key Performance Indicator (KPI)	Target
1: Public care cases allocated to Children's Guardian at month end	97%
2: Average working days to allocate Children's Guardian to care case	<3 working days
3: Private law cases allocated to Family Court Adviser at month end	97%
4: Private law section 7 reports filed by agreed date	97%

Additional KPI performance information can be viewed in the attached **Appendix 1**.

- Cafcass has exceeded KPIs targets all year.
- All Cafcass Service Areas are achieving KPI requirements year to date.
- KPI 2 performance is 0.7 working days to allocate a Children's Guardian (year to date), a minor increase from 0.5 for the same period in 2014/15.
- KPI 1 performance has been in excess of 99.5% all year nationally against the backdrop of significantly increased demands for service.
- KPI3 has been above 98% for the last 12 months.
- Details of the national Key Performance Measures (KPMs) monitored by the Family Justice Board are provided below for information. Although Cafcass is not directly measured by these, they cross reference with Cafcass' performance monitoring.

Key Performance Measure (KPM)	Ambition
1: Average duration of section 31 care or supervision cases	Within 24 – 26 weeks (averaged over the year)
2: Percentage of section 31 cases which are completed within 26 weeks	26 weeks, in line with the statutory requirement
3: Average number of hearings per new section 31 care or supervision cases	Average of 5 (or fewer) hearings be held per new section 31 care or supervision case
4: Timeliness of progression of section 8 cases in court:	
4a: Proportion of section 8 cases where the FHDRA or urgent first hearing takes place within six weeks	70% - 80% of FHDRA hearings take place within 6 weeks of the application
4b: Average time from application to first full order for section 8 cases	Average time for section 8 cases is maintained at 16 weeks, with an expectation that this should be reduced this during year
5: Take-up and initial effectiveness of publicly-funded family mediation:	
5a: Number of couples attending a MIAM where one or both parties are publicly-funded	6,000 couples a quarter attending a MIAM
5b: Number of publicly-funded family mediations reaching full/partial agreement on the issues in dispute	2,400 publicly funded mediation agreements a quarter reaching full/partial agreement on the issues in disagreement
5c: Proportion of MIAMs converted to Mediations Starts. The FJB has agreed that KPM5c also records the total number of mediation starts	No specific level of ambition set

# Public Law (Care)



Open Cases

11.4%



Allocation Time

0.7 Days



Demand

14.2%



Throughput

93.4%



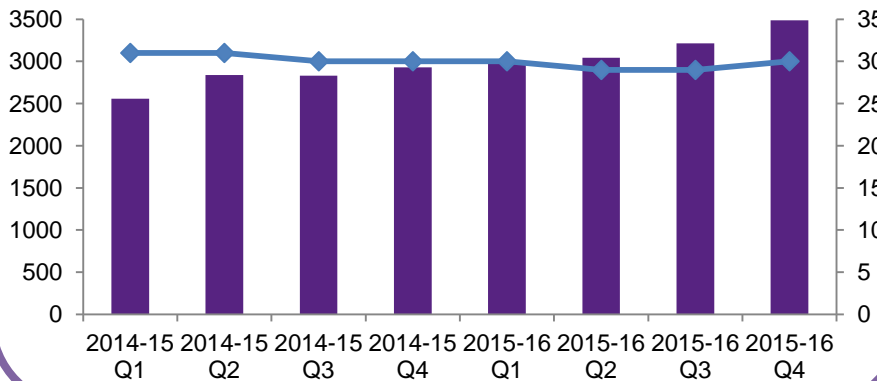
Duration

29 Weeks

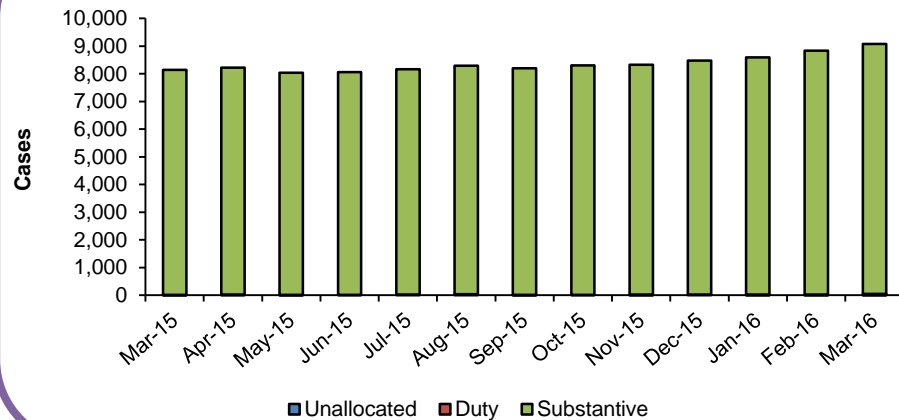
The duration for Q4 2015-16 is based on provisional numbers and may change at the time of official release of this data which will be around end of May 2016.

Additional Public Law performance information can be viewed in the attached **Appendix 2**.

### Public Law Care Application Demand and Duration



### Public law care workload



# Private Law



Open Cases

-10.4%



S7 Reports filed by  
Agreed date

98.8%



Demand

10.3%



Throughput

106.8%



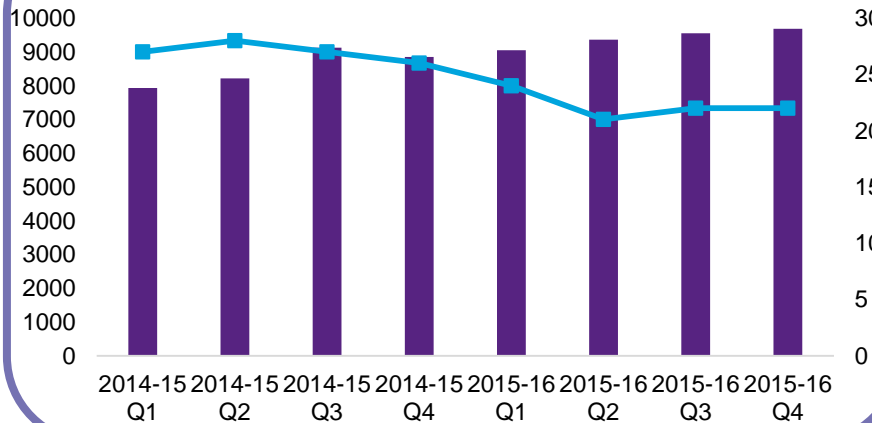
S7 Average  
Filing Times

10 Weeks

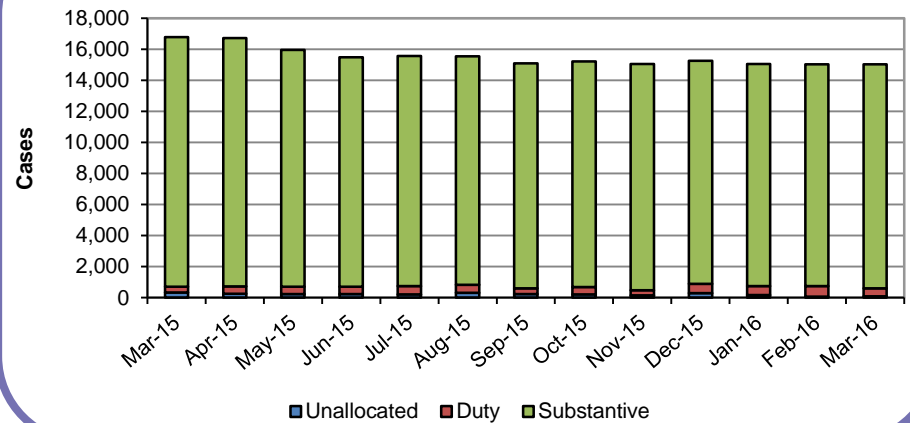
The duration for Q4 2015-16 is based on provisional numbers and may change at the time of official release of this data which will be around end of May 2016.

Additional Private Law performance information can be viewed in the attached **Appendix 3**.

### Private Law Case Demand and Duration



### Private law workload



# Public Law Care Application Heat Map

## Care Application Duration by DFJ area

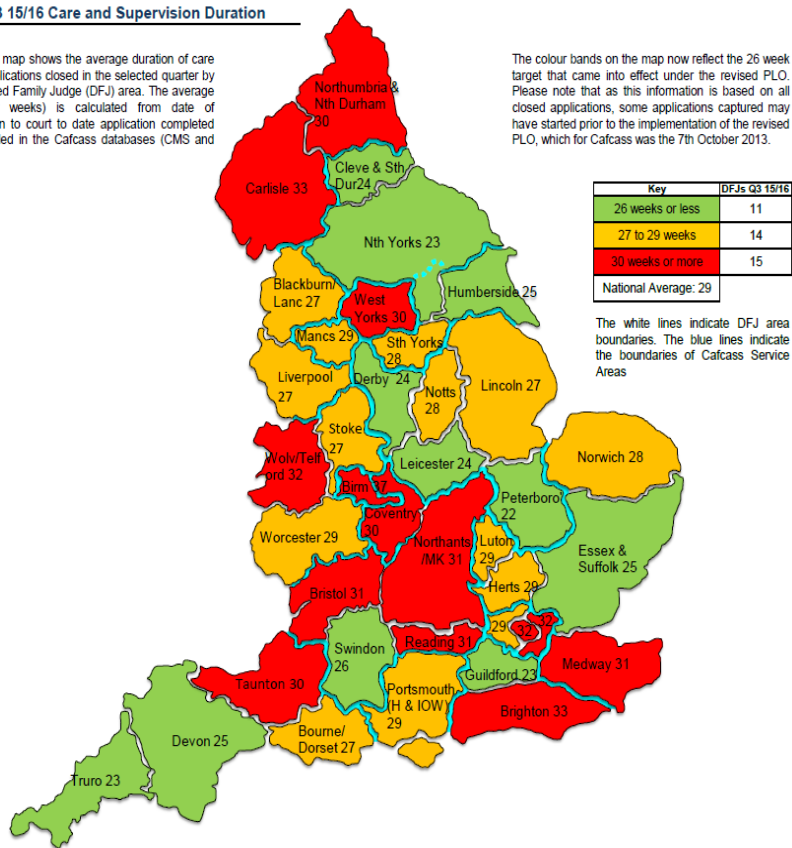
### DFJ Q3 15/16 Care and Supervision Duration

This heat map shows the average duration of care (s31) applications closed in the selected quarter by Designated Family Judge (DFJ) area. The average (calendar weeks) is calculated from date of application to court to date application completed as recorded in the Cafcass databases (CMS and ECMS).

The colour bands on the map now reflect the 26 week target that came into effect under the revised PLO. Please note that as this information is based on all closed applications, some applications captured may have started prior to the implementation of the revised PLO, which for Cafcass was the 7th October 2013.

Key	DFJs Q3 15/16
26 weeks or less	11
27 to 29 weeks	14
30 weeks or more	15
National Average: 29	

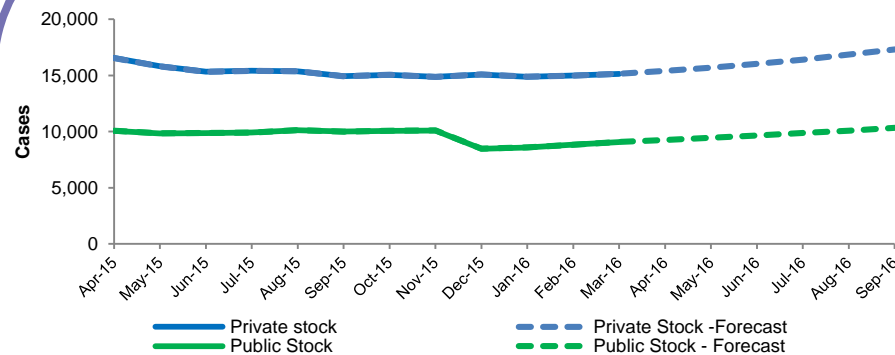
The white lines indicate DFJ area boundaries. The blue lines indicate the boundaries of Cafcass Service Areas



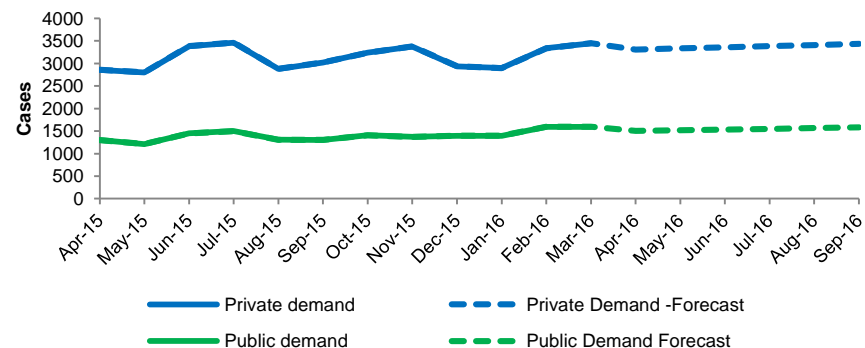
A full breakdown by DFJ can be accessed in the attached **Appendix 4**.

## Demand Forecast

### Open Case Stock Forecast



### Demand Forecast



- The forecast based on historical data show, an overall 10% increase in private law demand and 13% increase in total public law demand for 2016-17.
- MoJ forecast for public law range from 7% to 14% based on various scenario based forecast for 2016/17.

# ANNEX 1

## Cafcass Service Area Map



## Demand

New public law applications and private law cases

Demand has reduced by more than 2% on the previous year

Demand levels are within 2% of last year's total.

Demand has increased in excess of 2% on last year.

## Throughput

Cases opened / cases closed in rolling 12 month period (turnover)

Throughput (cases open/cases closed) exceed 100%

Throughput is below 100% but exceeds 90%

Throughput is lower than 90%

## Open Cases

New public law applications and private law cases

The stock of open cases has reduced by more than 2% on the previous year

The stock of open cases is within 2% of last year.

The stock of open cases has increased by more than 2% on last year.

## Duration

The Cafcass duration of a case

Cafcass case duration has decreased since last reporting period

Cafcass duration is 27 weeks or above and below 30 weeks.

Cafcass duration is in excess of 30 weeks

## Allocation Time

The time to allocate a children's guardian to a care case

The time to allocation is between 0 and 2.9 da

The time to allocation is between 3 and 4.9 days

The time to allocation is 5 days or above

## S7 Reports filed by Agreed date

The time to allocate a children's guardian to a care case

S7 Reports filed to agreed filing times are between 97% and 100%

S7 Reports filed to agreed filing times are between 90% and 96%

S7 Reports filed to agreed filing times are below 90%

## S7 Average Filing Times

The the proportion of section 7 reports that meet their agreed filing times.

S7 average filing times have improved since last reporting period.

S7 average filing times are the same since last reporting period.

S7 average filing times have increased since last reporting period.