

Cafcass Performance Update – Appendix

National YTD KPI Performance (April – December 2015)

National Total Area Performance Summary



	2015-16									2015-16 ytd / latest month	Nat'l 2015-16 ytd / latest month	2014-15 / latest month	Nat'l 2014-15 / latest month
	Apr-15	May-15	Jun-15	Jul-15	Aug-15	Sep-15	Oct-15	Nov-15	Dec-15				
Public law													
KPI 1: % Care cases allocated to CG at month end	99.7%	99.8%	99.9%	99.8%	99.6%	99.8%	99.8%	99.7%	99.7%	99.7%	99.7%	99.7%	99.7%
KPI 2: Avg working days to allocate CG (Receipt to allocation)	0.7	0.5	0.6	0.7	0.7	0.8	0.6	0.6	0.8	0.7	0.7	0.5	0.5
Private law													
KPI 3: % Private law cases allocated to FCA at month end	98.5%	98.6%	98.6%	98.7%	98.1%	98.5%	98.7%	99.0%	98.1%	98.5%	98.5%	99.4%	99.4%
Private law reports													
KPI 4: Filed by agreed date - s7 reports	98.2%	99.4%	99.4%	99.1%	99.3%	99.1%	98.5%	98.9%	98.7%	98.9%	98.9%	97.8%	97.8%

#N/A - indicates no data available

CG = Children's guardian

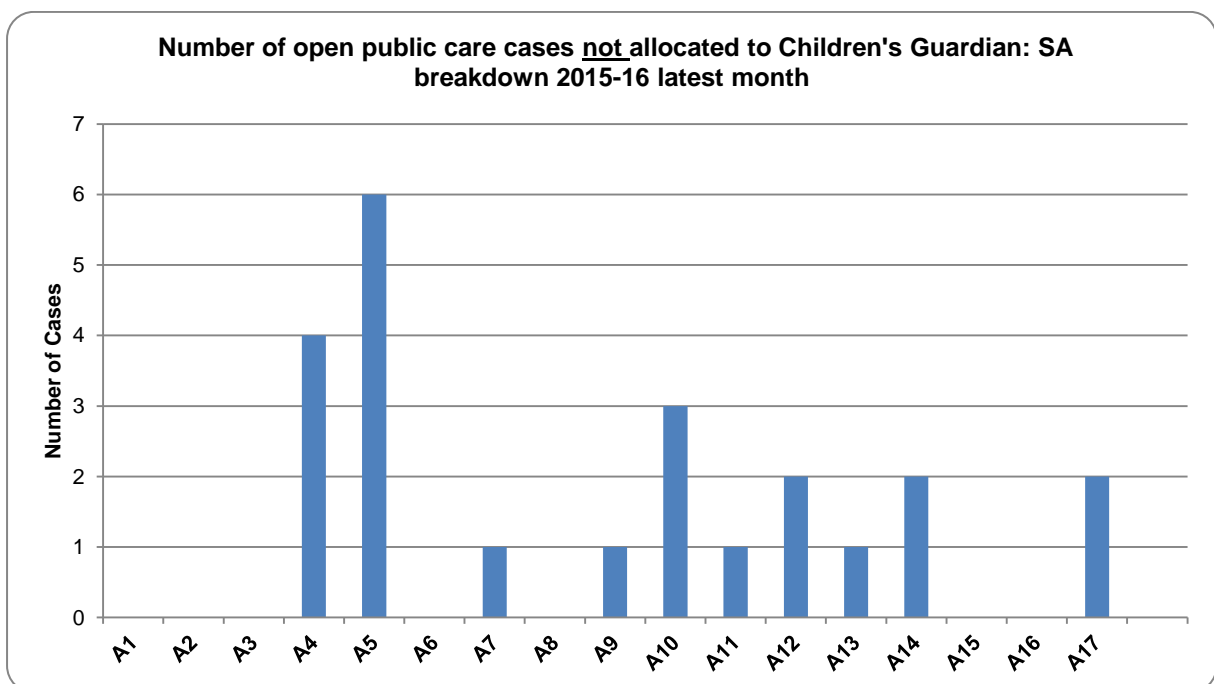
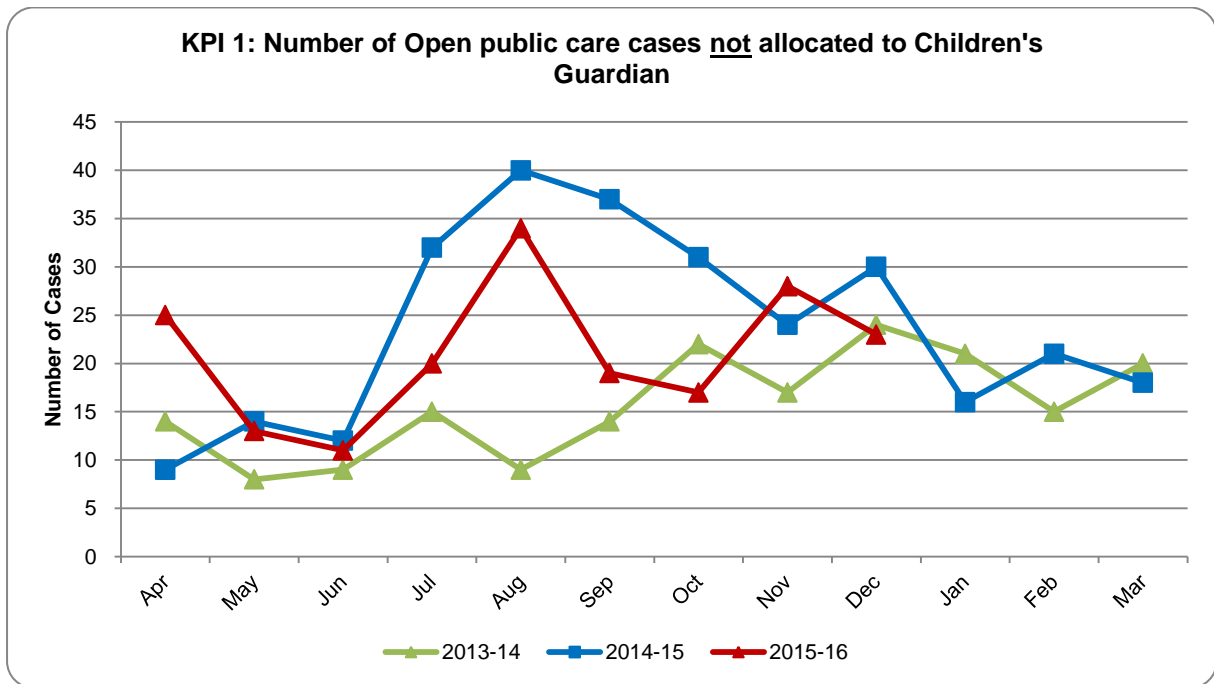
KPI performance by Service Area (2015-16 Year to date)

	2015-16 ytd / latest month																	Nat'l 2015-16 ytd / latest month	Nat'l 2014-15 / latest month	
	A1	A2	A3	A4	A5	A6	A7	A8	A9	A10	A11	A12	A13	A14	A15A	A15B	A16			A17
Public law																				
KPI 1: % Care cases allocated to CG at month end	100.0%	100.0%	99.7%	99.8%	99.5%	99.7%	99.9%	99.9%	100.0%	98.9%	99.5%	99.7%	99.6%	99.7%	100.0%	100.0%	99.1%	99.9%	99.7%	99.7%
KPI 2: Avg working days to allocate CG (Receipt to allocation)	0.0	0.5	1.1	1.3	1.2	0.9	0.2	0.5	0.4	0.8	1.0	0.4	0.6	0.7	0.4	0.5	2.3	0.1	0.7	0.5
Private law																				
KPI 3: % Private law cases allocated to FCA at month end	100.0%	100.0%	100.0%	100.0%	100.0%	100.0%	91.9%	100.0%	100.0%	100.0%	99.7%	100.0%	99.8%	99.8%	100.0%	99.8%	100.0%	100.0%	98.5%	99.4%
Private law reports																				
KPI 4: Filed by agreed date - s7 reports	98.7%	100.0%	99.4%	98.9%	99.3%	100.0%	98.7%	99.2%	99.5%	96.3%	97.6%	99.6%	98.5%	98.1%	98.7%	99.9%	99.1%	100.0%	98.9%	97.8%

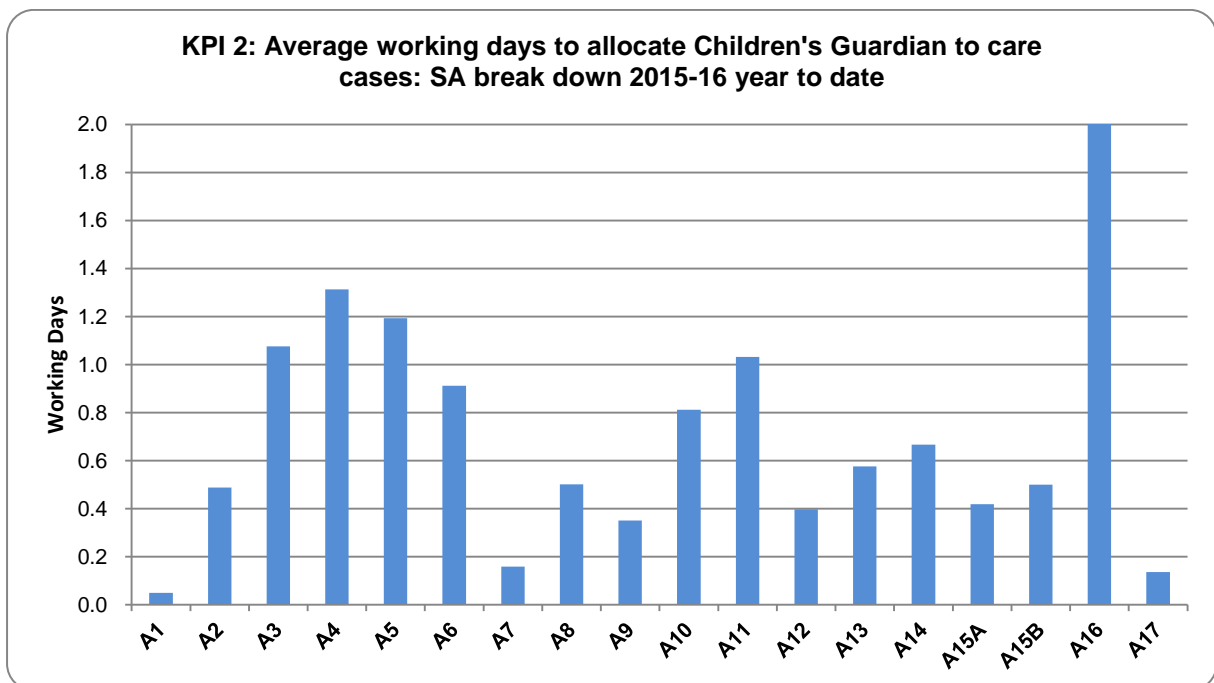
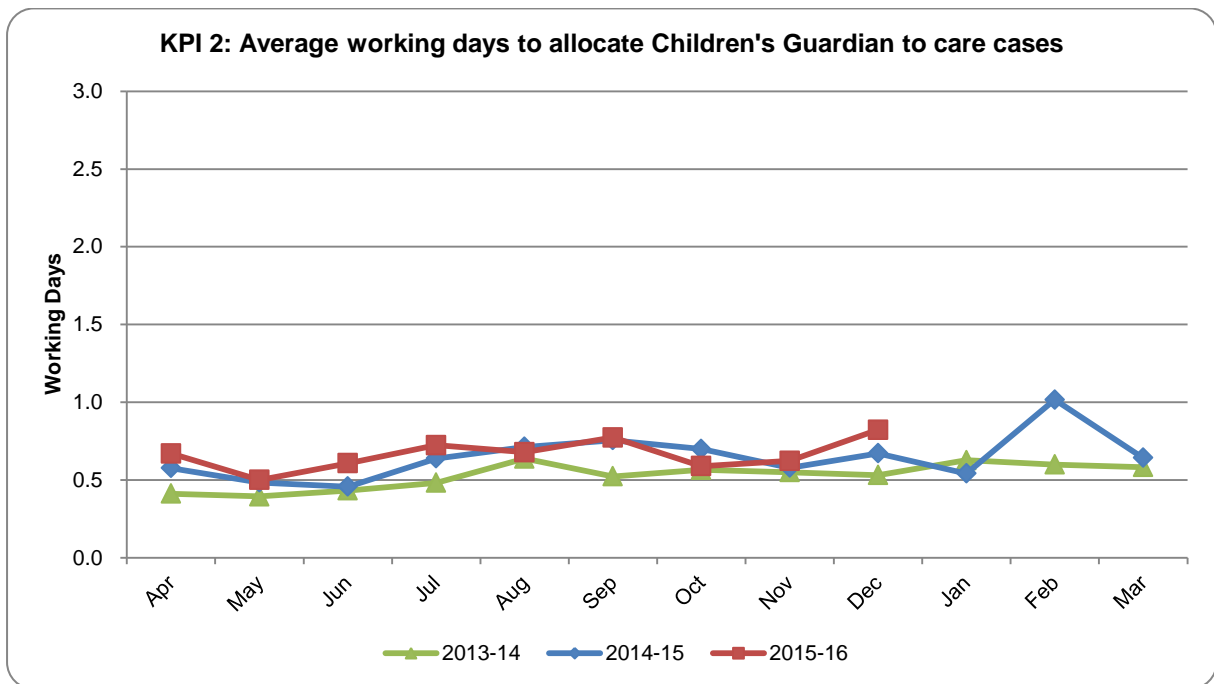
#N/A - indicates no data available

CG = Children's guardian

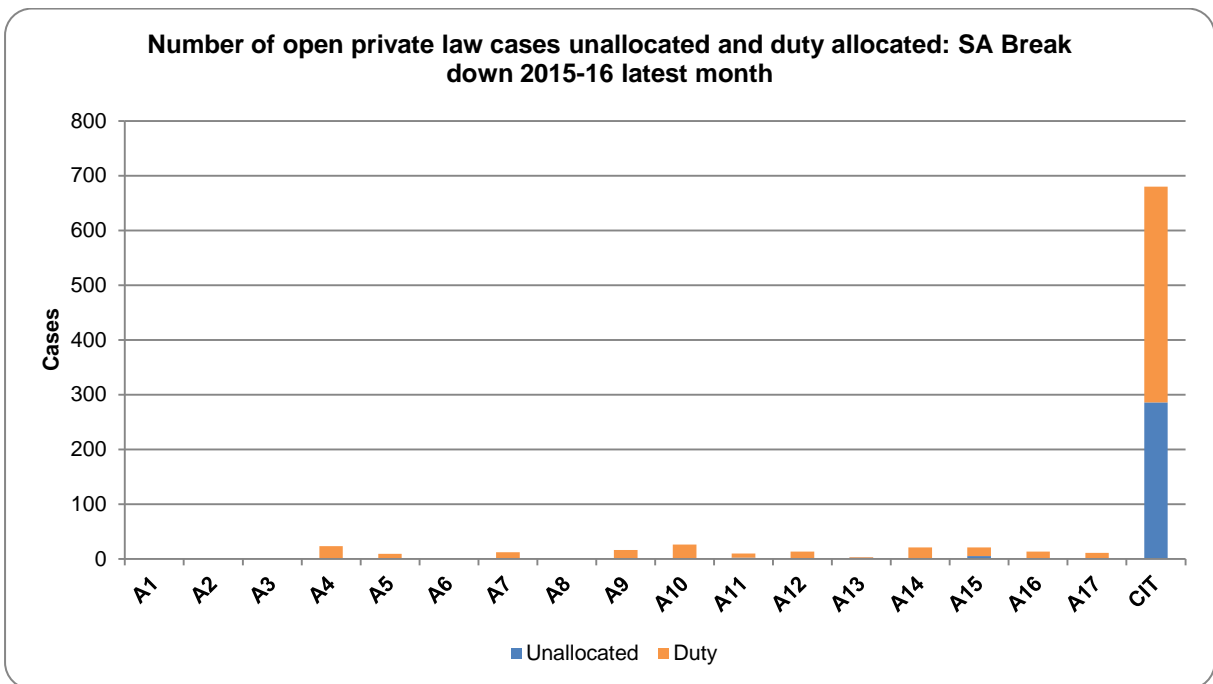
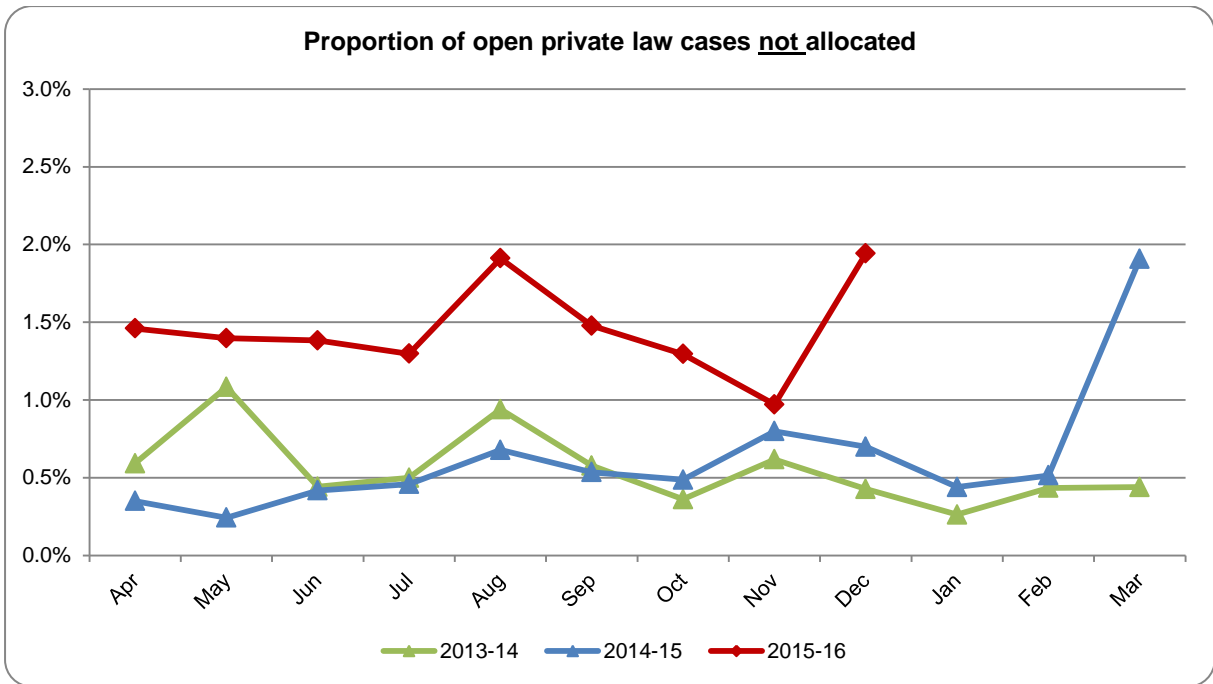
**KPI 1: Public law care cases allocated to Children's Guardian at month end
(Target 97%)**



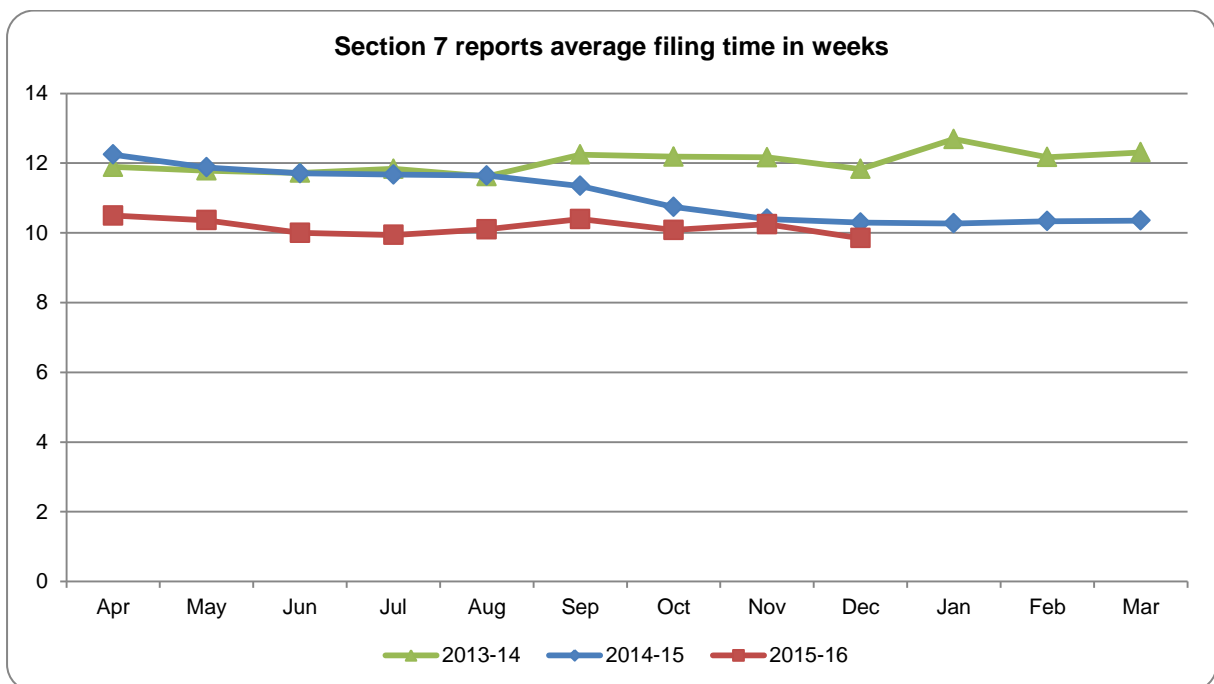
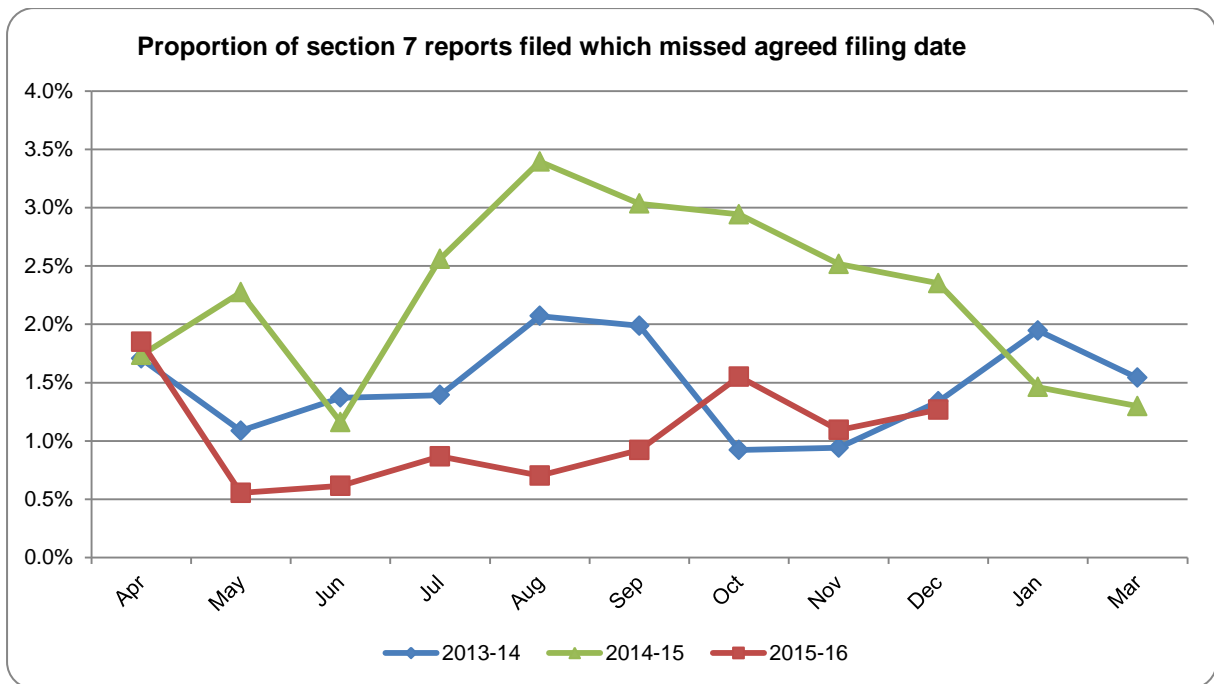
**KPI 2: Average working days to allocate Children's Guardian to care cases
(Target less than 3 working days)**



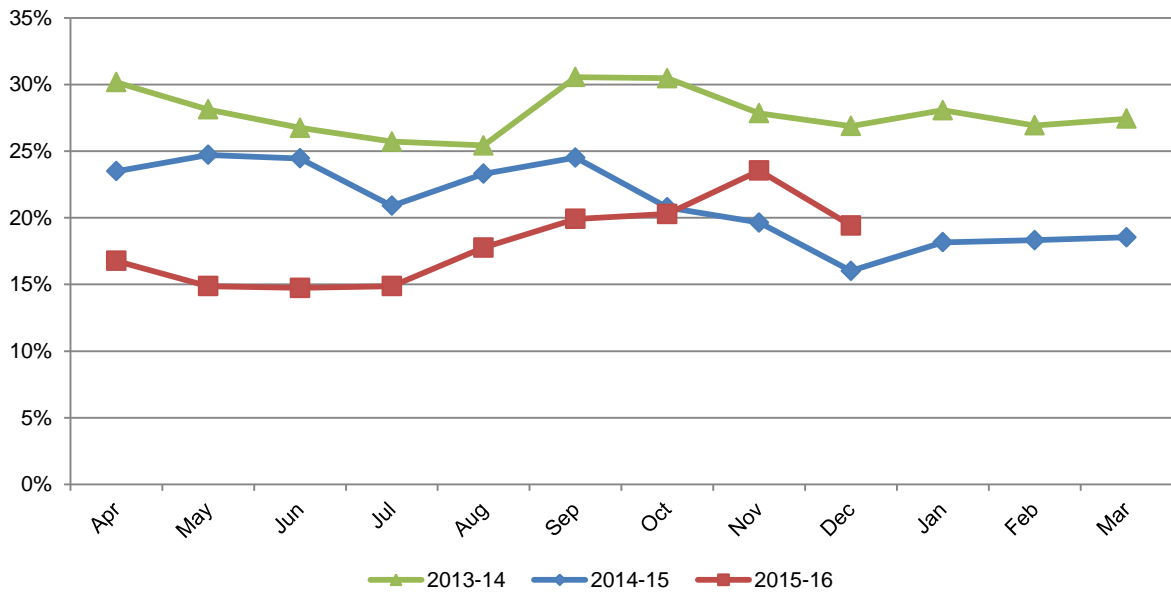
KPI 3: Private law workload allocated at month end (Target 97%)



KPI 4: Section 7 reports filed by agreed date (Target 97%)



Proportion of filed Section 7 reports extended



**Proportion of filed Section 7 reports extended by SA:
2015-16 year to date**

