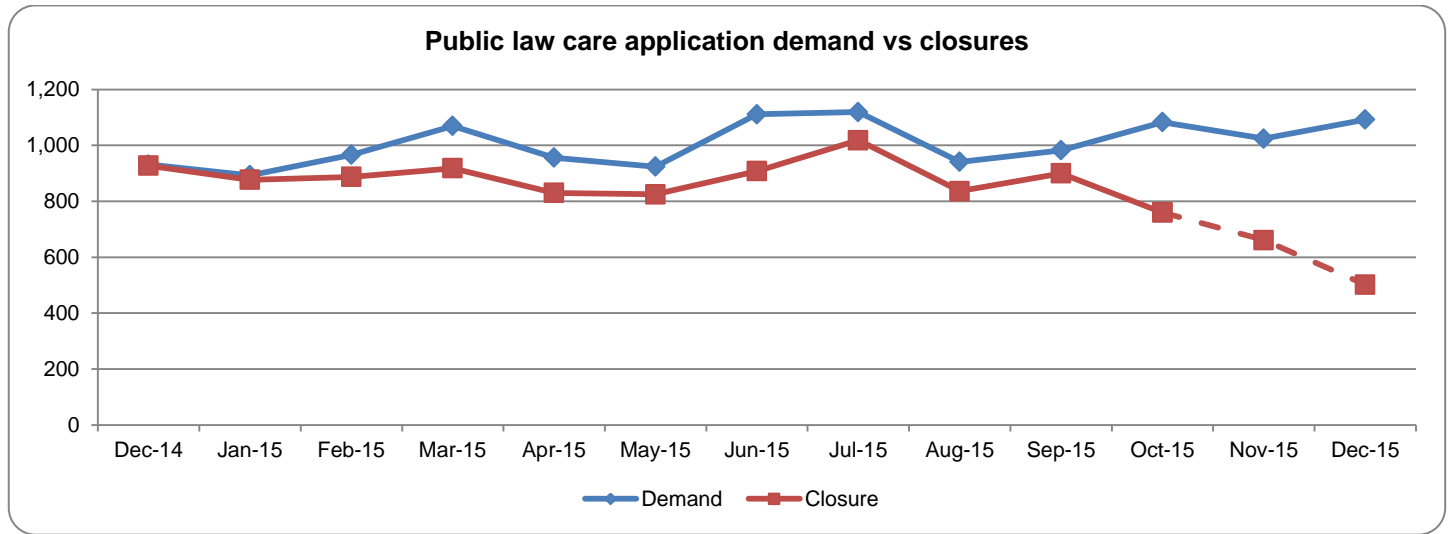


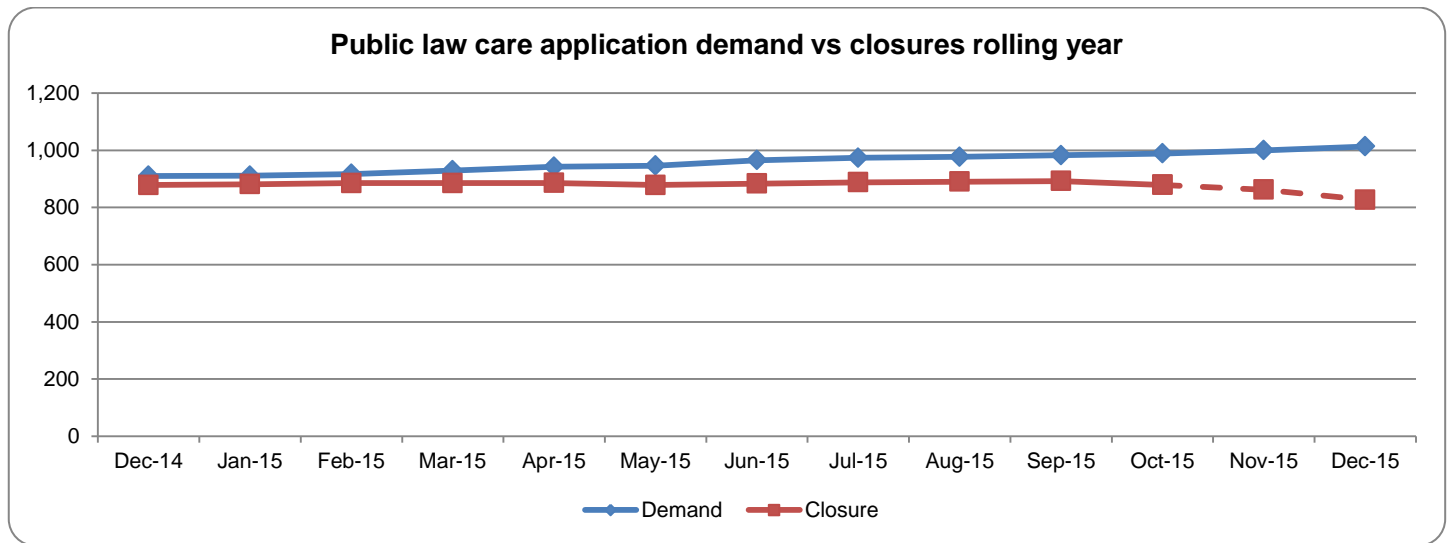
Cafcass Performance Update – Appendix

Public Law – Care Workload Flow



	Dec-14	Jan-15	Feb-15	Mar-15	Apr-15	May-15	Jun-15	Jul-15	Aug-15	Sep-15	Oct-15	Nov-15	Dec-15
Demand	931	893	966	1,069	956	924	1,111	1,119	941	982	1,083	1,024	1,092
Closure	927	877	887	918	830	825	908	1,018	836	900	760	661	502

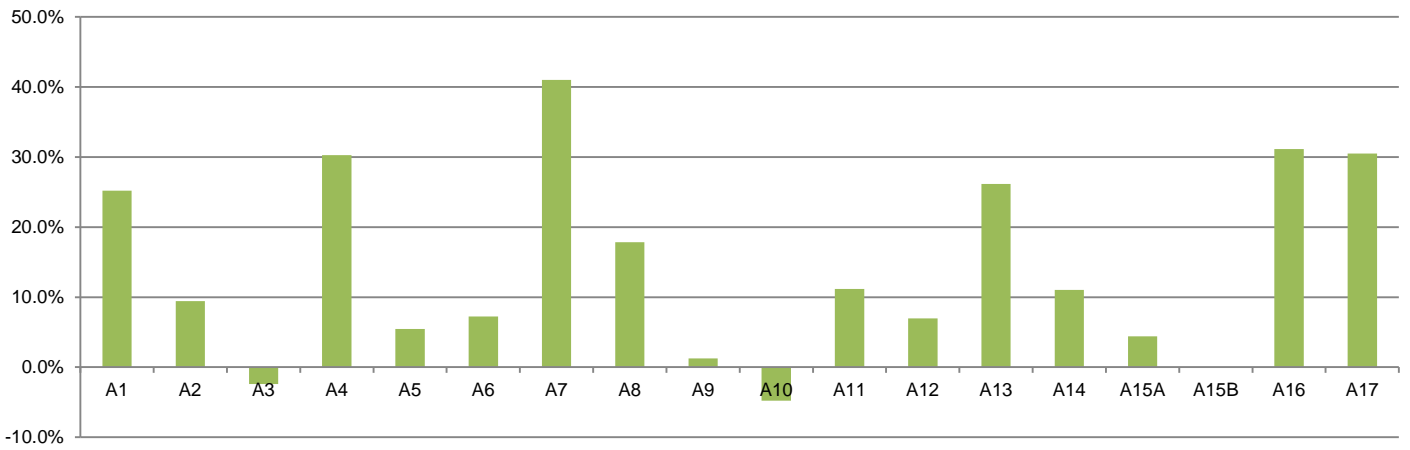
NB. Care closures in the most recent two months are not all concluded due to closure procedures and awaiting court orders – illustrated by the dotted line on the graph



	Dec-14	Jan-15	Feb-15	Mar-15	Apr-15	May-15	Jun-15	Jul-15	Aug-15	Sep-15	Oct-15	Nov-15	Dec-15
Demand	911	911	917	930	942	946	966	974	977	983	989	1,000	1,013
Closure	879	881	885	886	886	879	884	888	890	893	879	862	827

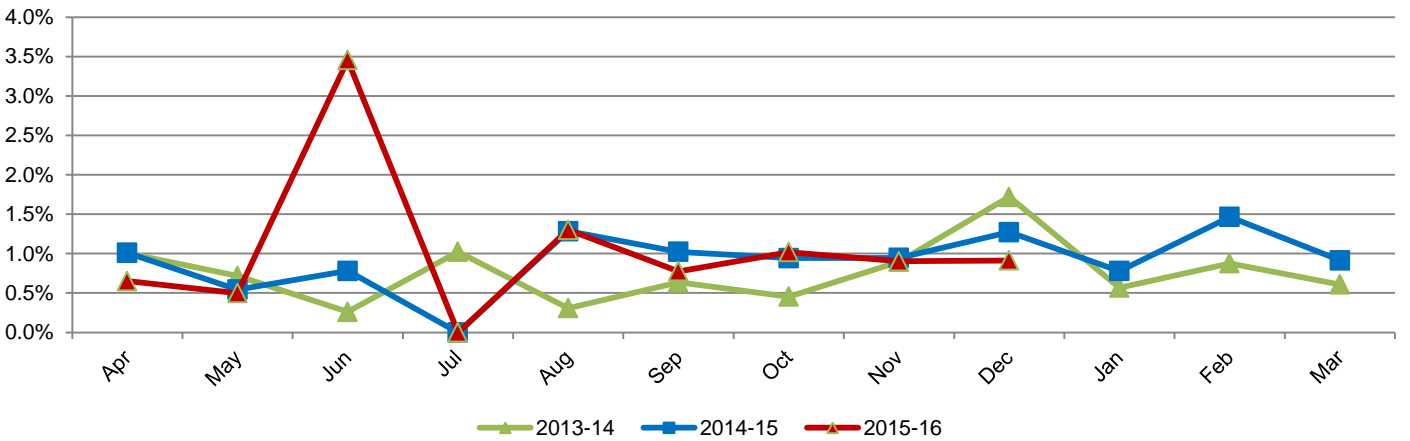
The above graph displays rolling year averages for care application demand and closures, as a supplement to the individual month figures. The rolling year average evens out the seasonal variations and helps to highlight longer term trends.

Total public law care application demand growth ytd - SA breakdown

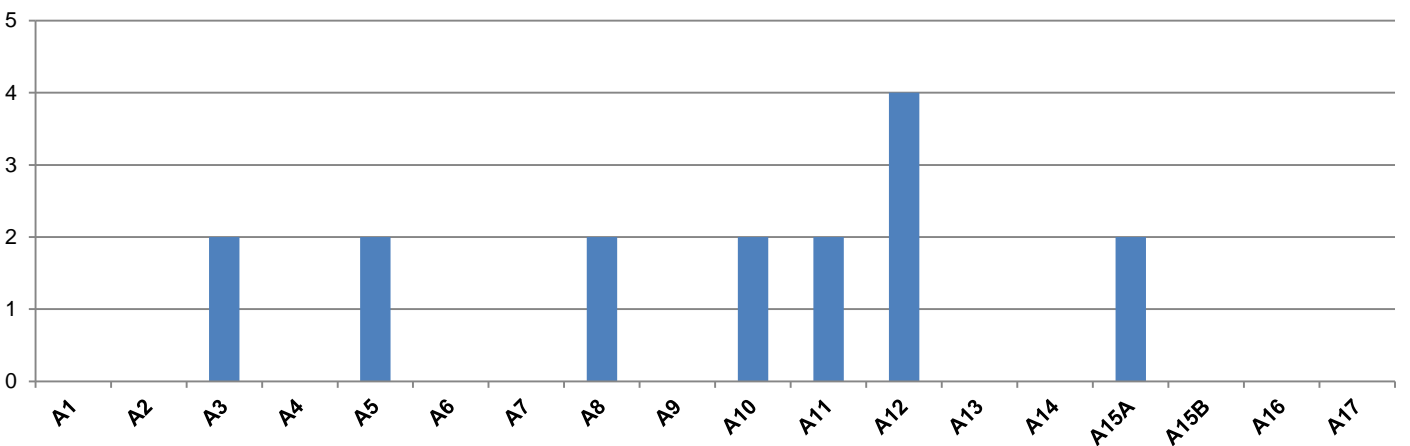


Public Law - Non-Care Workload (Non KPI)

Proportion of open public law non-care cases not allocated

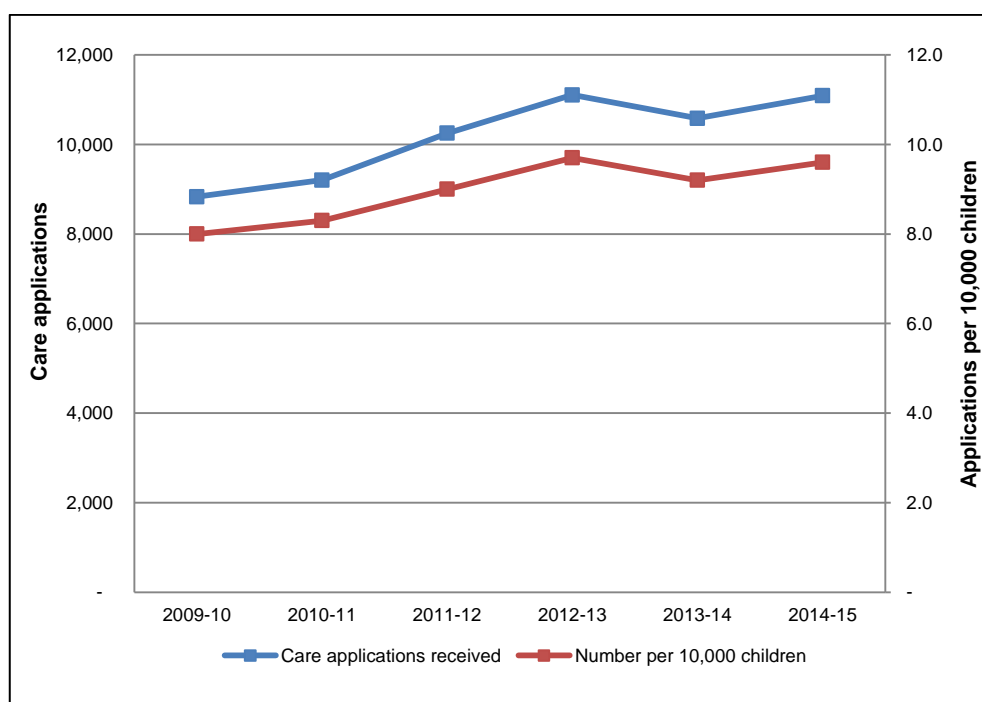


Number of open public law non-care cases not allocated : SA Breakdown latest month



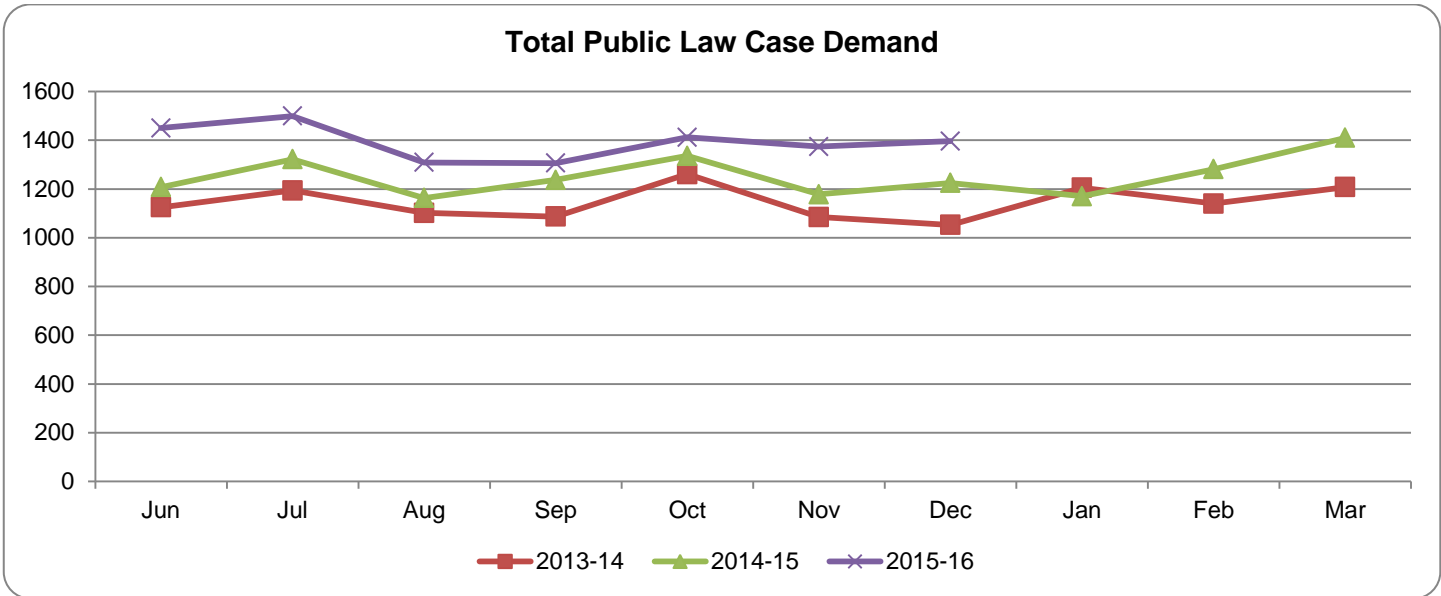
Care Application Demand and Rates per 10,000 Children

Cafcass service area	2009-10		2010-11		2011-12		2012-13		2013-14		2014-15	
	Care applications received	Number per 10,000 children	Care applications received	Number per 10,000 children	Care applications received	Number per 10,000 children	Care applications received	Number per 10,000 children	Care applications received	Number per 10,000 children	Care applications received	Number per 10,000 children
A1	374	9.9	434	11.6	505	13.4	500	13.3	473	12.7	510	13.7
A2	426	10.6	458	11.4	513	12.8	517	13.0	376	9.4	458	11.5
A3	632	11.0	657	11.4	686	11.4	752	12.4	706	11.6	720	11.8
A4	433	11.0	482	12.3	513	12.8	476	11.8	401	10.0	412	10.2
A5	440	9.0	476	9.7	578	11.5	538	10.6	505	9.9	509	10.0
A6	255	5.5	310	6.7	300	6.3	389	8.2	382	8.0	421	8.8
A7	469	6.1	478	6.2	476	6.0	634	8.0	592	7.4	601	7.4
A8	418	7.8	441	8.3	535	10.1	598	11.2	574	10.7	645	12.0
A9	699	8.6	736	9.2	806	10.0	923	11.5	1,036	12.9	1,141	14.2
A10	338	7.2	341	7.3	380	8.0	451	9.5	480	10.1	474	10.0
A11	659	7.4	738	8.3	826	9.1	892	9.8	901	9.8	917	10.0
A12	570	10.4	510	9.3	561	9.7	669	11.4	625	10.6	573	9.7
A13	259	6.6	238	6.1	337	8.4	396	9.8	387	9.5	457	11.1
A14	851	6.5	904	6.9	972	7.3	988	7.4	943	7.0	1,027	7.6
A15	1,394	8.4	1,267	7.5	1,471	8.1	1,689	9.1	1,550	8.3	1,550	8.1
A16	413	7.4	424	7.5	417	7.4	357	6.3	332	5.8	339	5.9
A17	201	5.4	309	8.3	377	9.8	338	8.8	321	8.3	334	8.6
Total	8,831	8.0	9,203	8.3	10,253	9.0	11,107	9.7	10,584	9.2	11,088	9.6



Notes:

1. Figures in the above table and graph are provided from the Cafcass national case management systems (CMS and ECMS) as well as the ONS. The units of measurement are A) care applications upon receipt from the court and entry into the database by Cafcass and B) the child population (0-17) as estimated by ONS based on 2012 population projection.
2. The calculated figures are multiplied by 10,000 to obtain tangible units and therefore represent the applications per 10,000 child population.
3. Child population figures are provided by Local Authority and have been repackaged geographically into Cafcass service area.
4. ECMS is a live system, continually updated and is subject to change when further updates are made. Data from CMS is a static snapshot on the day it ceased to be a live database, 11th July.



Between April and December 2015, 12,662 Public Law Cases have been received; this is 13.7% higher than the same period in 2014 when 10,922 cases were received.